



## December Newsletter 2023

### Message from the Principal

*Dear Parents/Carers & Students*

*As we head out of 2023 and into 2024, I would like to take this opportunity to thank students, staff, SAB, carers, and parents for their continued support of the school.*

*2022-2023 has been a superb year for Ingleby Manor Free School. In the summer, our Year 11 leavers achieved fantastic results in their GCSE examinations, and December 2022 saw the school deliver a fantastic Ofsted report. The school is going from strength to strength and our popularity increases year on year.*

*In such a busy term I have been genuinely impressed with our school's commitment to the community and extra curricula activities. I hope you got the chance to see our performance of 'Beauty and the Beast'. It was the ideal way to kick off the festive season and it was incredibly well received by all who saw it, including our guests from Ingleby Care Home. It has also been humbling to see the extensive charity work undertaken by the students, staff and parents in their work with Shelter UK, Save the Children, the Teesside Hospice and The Teesside Charity.*

*To Mrs Li, who is leaving Ingleby Manor this term, I wish you the very best for your future career and thank you for the service you have provided.*

*Finally, may I wish you all - students, staff, SAB, carers and parents - a happy and peaceful Christmas. I hope you will get the opportunity to spend some special time with loved ones and come back refreshed next year.*

*Best Wishes,*

*Ray Parkinson  
Principal*



## *Student Leadership Team 2023/2024*



### **Student Leadership Team**

Our Student Leadership Team are allocated areas of focus and lead the student body, lead on events and initiatives and represent the school in these areas.

### **Senior Leadership**

The SLT are an elected body from the school and are organised into various working groups: Charity, Transition, House Identity, Community & Fundraising, Equal Opportunities, Student Wellbeing, Anti-bullying, and Learning/Achievement.

The groups meet regularly, supported by a member of the school SLT and their views help inform initiatives and direction.

**CHARITY** The Charity Group oversees all that the school does in terms of fundraising from deciding what charities to support to how to raise money.

**TRANSITION** The Transition Group provides expertise in supporting student transition through key stages and assists the school staff transition team in visiting feeder primaries throughout the year.

**HOUSE IDENTITY** is a key driver in installing competitiveness across school. The team provides innovative ideas on how to raise competition and support engagement with activities provided.

Working with the community is another area of focus – the team liaises with external groups to provide opportunities to strengthen links in the local area. The team also encourages all voices to be heard.

**EQUAL OPPORTUNITIES** The Equal Opportunities Group work throughout school and provide lots of thoughtful discussion as to how we can facilitate a feeling of inclusiveness throughout our community.

**STUDENT WELLBEING & ANTIBULLYING** Student Wellbeing and the Antibullying Group work closely as a team to ensure students are happy, confident and know who and where to go if they have any issues regarding bullying whether physical, verbal or online.

**LEARNING & ACHIEVEMENT** For Learning and Achievement, the group is keen to foster aspiration across school – they inform decisions around Manor Marks and our praise system.

## Year 11

### Year 11 Trial

We are very proud of the Year 11's for the way that they have conducted themselves through the first mock season. There will be a Year 11 Celebration Evening on Wednesday 24<sup>th</sup> January where results will be given out and students awarded for effort and progress. More details to follow. I hope that you will be able to join us.

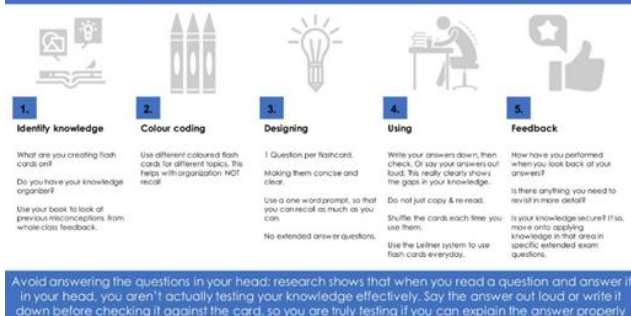
### Year 11 Intervention Timetable

This remains the same for Spring 1 but there will be a change of students requested for intervention when the mock data has been analysed. Information will be sent to parents/ carers in time for the Celebration Evening.

### Year 11 Teaching and Learning Conference

Before Trial 1 commenced, all Year 11 students were given a kick start to their revision with a resource pack and tried and tested revision techniques. Another Revision session will take place for students in the Spring Term.

#### Summary: How to use flash cards



#### Summary: Self Quizzing



Ensure that you complete all subjects and all topics – not just the subjects you enjoy the most or find easiest.  
Practice makes perfect!

#### Summary: Brain dumps



Brain dumps are a way of getting information out of your brain.

## KS 3

### KS3 Home Learning Reminder

Teachers set Home Learning as an assignment on Teams in the 'Home Learning Team 23-24' for their year group – 7, 8 or 9. This involves a weekly teams quiz which tests key retention and recall and is linked to classwork, the Knowledge Organisers and forthcoming assessments. The quiz is self-marking. An exception to this is that carousel subjects of Music, Food Technology and Engineering set their Home Learning fortnightly in their class team. Art sets a half termly project.

Your support in ensuring Home Learning completion is much appreciated. Many of our students are now in good study habits and *they are aware that completion will be linked to participation in trips in the Summer Term.*

Should there be issues with Teams, passwords or logins, Tutors can assist and, on a Tuesday, and Thursday break time, students can use the IT Drop-in service.

Parents and carers can monitor Teams by downloading the app and inputting student details.

*Home Learning Club takes place Monday to Thursday from 3.30 to 4.30pm and all are welcome to attend.*

### Word Of The Week



**WORD OF THE WEEK**

**'intrinsic'**  
[ɪnˈtrɪn.ɪk]  
WB: 6/6/22

**Etymology (Word Origin)**  
Latin: *intrinsecus* (from within)  
English: *intrinsic* (adjective)  
French: *intrinseque* (adjective)

**adjective**  
Belonging naturally.

**USE IT**  
2. Most mothers have this intrinsic need to protect their children at all costs.  
2. Because my grandmother made that doll, it has a lot of intrinsic meaning to me.

**Synonyms**  
essential, inherent, innate, inborn, congenital.

**Antonyms**  
extrinsic, acquired

**DEBATE IT**  
1. Can someone tell me situations where you can use the word intrinsic?  
2. If you have an intrinsic ability to do something – what is special about that ability?  
3. If you feel something intrinsically – what do you feel about that thing?  
4. How can an object have 'intrinsic' meaning?

**Extrinsic Motivation**

**Intrinsic Motivation**

Below are the words of the week for the Spring Term. Students are introduced to these words in form time and teachers and students are encouraged to use them in context whether this be in verbal or written work. Students receive Manor Marks for Word of the Week.

Challenge
Didactic
Fervour
Skein
Pensive
To garner
Disparity
Austere
Ostentatious
Prosaic
Exuberant

## Knowledge Organisers

*The return of!* All students in Years 7 to 9 will be given a Spring Knowledge Organiser when we return in January. Students might be set home learning from this and students are encouraged to use this book independently to ensure that key themes and skills are memorised and understood and that retention and recall methods are practiced. **The expectation is that students have these with them at all times.**



## Trainee Teachers

We have thoroughly enjoyed watching our trainee teachers blossom in their placements with us. We say goodbye to Anya Dooley (English – Durham University), Eleanor Norton (Science – Durham University), Rebecca Davies (Geography- Durham University), Emma Simons (History – NELT) and Azhar Hussain (Computer Science – Teesside University). We hope that they have enjoyed their time with us as much as we have enjoyed having them. We wish them all the best of luck in their new placements and in their future careers. Let me take this opportunity to thank their subject mentors for their amazing support and guidance.

## Proud Thursday

We love to celebrate all of the fantastic work and achievements of our students and we meet many on a Thursday for their Hot Chocolate with whipped cream and Marshmallows.





## Year 7 History Project

Over the festive break and throughout January, Year 7 students are invited to take part in 'The Castles Challenge'. Over the years we have seen some amazing information boards and models of castles that have been made brought not school and Mrs Kempson is excited to see what our current year 7 students can do. All castles received will be put on show around school for students, staff and visitors to see.



**Task:** Produce a project presented in a form of your choice on the topic of 'CASTLES'

**Ideas of topics to research:**

- Why castles were built in England after 1066
- How castles were built
- How castle design and styles changed.
- Which sites were chosen to build a castle [on](#)
- How castles were attacked and defended
- Lifestyles of those living in a castle
- You **must** also include a list of all your sources of information used.

**You might like to:**

- Create a model of a castle using any materials you choose.
- A case study of a real castle – a story over time.

**Deadline:** You have until Friday 26<sup>th</sup> January to complete this project

**How will you be marked?:**

You will be marked with a gold, silver or bronze level sticker – depending on effort, imagination, quality of historical research and presentation.

Minor marks, as well as other prizes will be awarded.

If you need any help speak to your class teacher – don't struggle on alone.



## School Trips



### Battlefields 2023

105 years ago the First World War came to an end, leaving an estimated 20 million people dead in its wake. 25 million more had been wounded during the conflict; ethnic cleansing, genocide, revolutions and the spread of a lethal new strain of influenza had added to the body count, leaving deep scars not only in the flesh but also in minds of a generation. The damage the war did to European society - our society - is hard to fathom. From the seeds of hate and fear that were sown after war, there grew discontent and instability. Brutal dictatorships arose which led into a second, even more terrible, global conflict.

Along the former Western Front, from the Channel coast, through Belgium and France up to the borders of Switzerland, huge war cemeteries - enormous cities of the dead - stand as silent reminders and as an admonishing heritage, urging us and our children to make sure that something like this will never, ever happen again.

We are proud that the History Department were able to run a trip for Year 10 GCSE history students to be able to connect with the heritage of the First World War on a visit to the former battlefields of the First World War in Belgium and France in September. It was an amazing experience for everyone who attended.



### Clinical Psychology Trip

A fantastic group of our year 11 students accompanied Mr Ham-Ying and Mr Brooks to attend a talk at Teesside University about the realities of what to expect from pursuing a career in Clinical Psychology. Students were able to meet with and ask questions of professionals working in the field, as well as receive information about what the journey to get to that point is like. It was a great experience, and a brilliant opportunity offered to us by the university that we are very glad we were able to partake in. Students left saying that they were clearer on what they needed to do to pursue their dream career in psychology.

Don't forget to keep an eye on our twitter feed for information about upcoming careers events for all other year groups in the new year!

## Sports & PE

Girls Netball team have had an amazing half term with wins in the Under 12 and Under 13 categories.



Year 11 boys football team have had an amazing half term with a number of wins.

## Reindeer Run



Ingleby Manor School supported Teesside Hospice again this year with their Reindeer Run. Students were invited to donate £3.00 to take part in the event.

All participants received Reindeer antlers and Rudolph noses to help them get into the Christmas spirit.

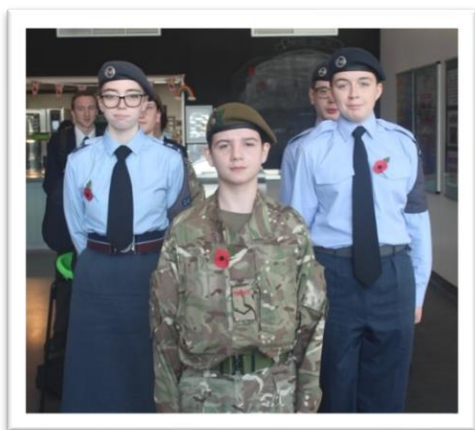


**Total amount raised: £540.00**





## Remembrance Day 2023



In memory and to honour the fallen and those currently serving in the armed forces, Ingleby Manor School held a Remembrance Day service and observed a 2-minute silence across the school on Friday 10<sup>th</sup> November.

We also laid a wreath at the cenotaph as a mark of respect on behalf of our community.



## Careers Fayre

Students in Years 9 & 10 had the opportunity to attend a Careers Fayre at School.

Students were able to get advice and information to help them begin thinking about their next steps. We had representatives in from The Army, Middlesbrough College, Askham Bryan, Nrthrn Baby Records and many more!

Thank you to all of the providers who gave up their afternoons to help provide our students with such a beneficial experience – and thanks to the parents/guardians who came in to ask questions and get some advice to help further support their children too.

Well Done Mr Ham-Ying for organising a fantastic event.

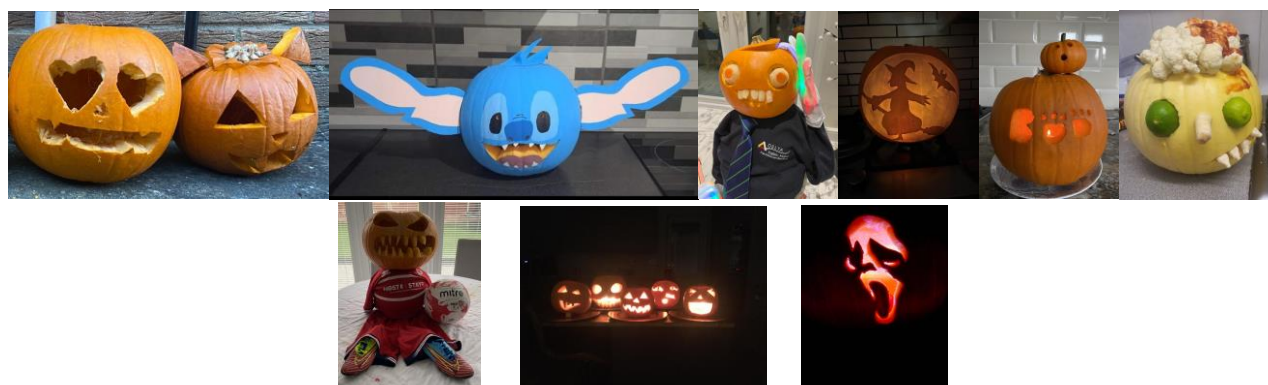
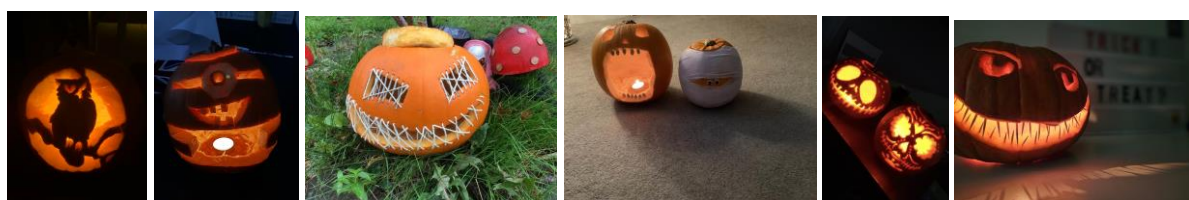


## Pumpkin Carving Competition

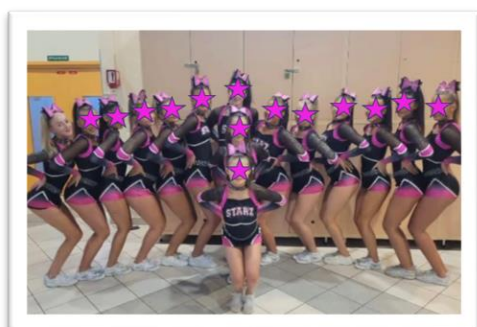
**Well Done to the following Students  
who were selected as this year's winners:**

- **Zayana McGregor**
- **Rocco Hill**
- **Katie Lochrane**
- **Teri-Rose Hancock**
- **Karah Iley**
- **Summer Nixon**

**Each winner received 1000 Manor Marks  
(equivalent to £5.00 value)!!**



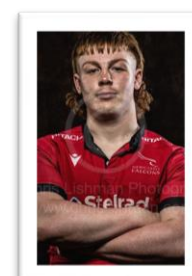
## Celebrating Achievements



Emily (Year 8) attended a cheer competition in Paris at the start of December where her team won 1st place and a bid for Summit in Orlando Florida next year.

This is the equivalent to the Olympics for cheerleaders and a really big achievement for her and her teammates. Well done!

We are very proud of Myles (Year 11) who is in receipt of a number of offers of scholarships for various colleges due to his success in playing Rugby. This is his official photo from the Newcastle Falcons.



## Toy Drive for The Teesside Charity



The Teesside Charity

To learn more about The Teesside Charity and the fantastic work they do across the region, click on the link below

[The Teesside Charity - Bridging the Gap](#)

During every festive season, Ingleby Manor School likes to support a Charity and help those in need. Over the years we have collected food for the local foodbank, put together shoeboxes to send to those in need across Europe as well as producing care hampers for the local homeless shelter.

This year we joined forces with The Teesside Charity to help with their Toy drive.

The support we received with this from students, parents, staff, and visitors was beyond what we ever imagined.

The quantity of Toys and Gifts that we received was amazing, and we would like to thank everyone who made a donation!



## Ingleby Care Home Festive Visit

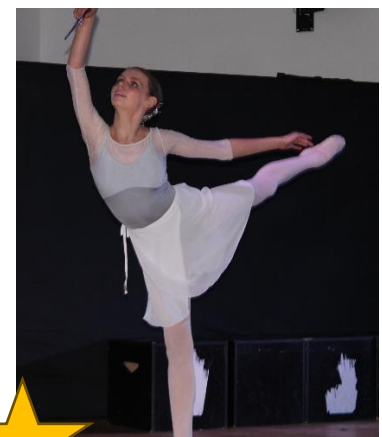
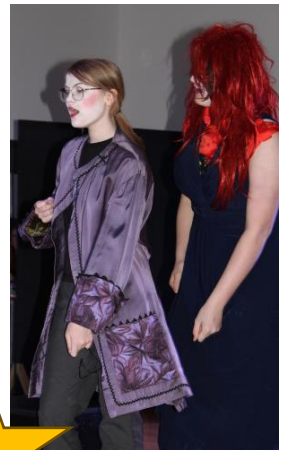
We were so happy to host an afternoon with some of the residents from Ingleby Care home. They attended a showing of the Beauty and the Beast Panto followed by a festive afternoon tea.



Students from the cast had a lovely time chatting with our guests over mince pies and hot chocolate.



## Christmas Show



Students performed amazingly at this year's pantomime of Beauty and the Beast.

Here are some photos of the production.



## Festive Fun Trips



Year 11 students had the opportunity to spend an afternoon and evening shopping at the Metrocentre.

Students in years 7, 8 9 & 10 were able to spend the afternoon at Showcase Cinema watching the new Marvels movie.



As a festive treat, all students received a selection box to either eat in school or take with them on their trips.

## Christmas Countdown

In the run up to Christmas, 'applause on the doors' students have been able to choose a scroll and win a variety of prizes.

Well done to them – We hope they choose well.



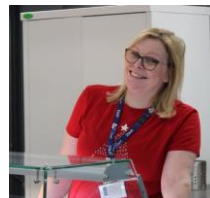
**FESTIVE PRIZE DRAW**

SLT & Learning Manager  
Awards

## Christmas Dinner & Festive Jumper



Students had a fun afternoon enjoying the festivities with a Christmas dinner and all the trimmings whilst wearing their Christmas Jumpers to raise money for Save the Children.



## Raising money for Shelter UK



On Sunday 10<sup>th</sup> December the Enterprise Group raised over **£300** for Shelter UK on their sponsored walk event climbing up Captain Cook's Monument on Easby Moor.



## Festive Fun and Games

Students had a blast in their Festive Assemblies led by their Learning Managers this week. Check out some of the photos below:



## Year 9 Science Mavericks

28 students in year 9 represented Ingleby Manor School in a science challenge against other schools across Delta Academies Trust. Students had to compete in different scientific challenges testing their practical skills, technical skills and teamwork skills.

The students were fantastic and hit the ground running winning some of the challenges early in the day and kept up with the hard work throughout the day to finish **joint 1st place** at the end of the day.





## Uniform & Equipment Reminder

At Ingleby Manor Free School we expect every student and member of staff to achieve the highest standards they are capable of, in every sphere of school life. High standards of personal presentation and correct wearing of uniform are important and can make a significant contribution to our ethos of mutual respect throughout the school. We encourage all students and staff to take pride in their personal presentation including having suitable haircuts and hairstyles, smart attire correctly worn, and appropriately discrete make-up and jewellery. If you have any queries or would like advice about any aspect of our uniform and presentation policy, then please ask any member of the school staff – we will be pleased to help. We have designed our uniform to be smart and practical and have consulted widely with our suppliers at Elizabeth's Embroidery and Motif 8, our Trustees, founding families, staff and the wider community.

### **Being Presentable at ALL Times**

All students in Year 7-11 are required to wear the school uniform. Blazers must be worn, with shirts tucked in at ALL TIMES. School jumpers can be worn under their blazer.

In classes, school blazers can be removed with the approval of the class teacher. On very hot days, the Principal may notify students that they are allowed to remove their blazers. On such occasions, blazers must be carried and never forced into bags or tied around the waist.

Blazers must always be worn on corridors and when entering or leaving the school grounds at the start and end of the day.

**The final decision with regard to all issues relating to uniform will be made by the Principal.**



Girls	Boys
Navy blue blazer with school logo	Navy blue blazer with school logo
School clip on tie	School clip on tie
White office style shirt with a collar suitable for a tie (no polo shirts)	White office style shirt with a collar suitable for a tie (no polo shirts)
Charcoal grey trousers (no cling style trousers e.g., leggings or combats/ chinos) OR charcoal grey knee length skirt (skirt must be knee length and non-figure hugging)	Charcoal grey trousers (no combats/ chinos) OR charcoal grey knee length shorts
Plain flat polishable or patent leather black shoes – block heel style, maximum height 3cm (no pumps, trainers or kitten heels)	Plain flat, polishable or patent leather black shoes (no trainers)
Plain black, charcoal grey or white socks, or plain black, charcoal grey or navy blue tights (over the knee socks are not permitted)	Plain grey or black socks
School bag – sufficiently robust and able to fit an A4 folder inside	School bag – sufficiently robust and able to fit an A4 folder inside

### PE Kit

- School colours sports shirt
- Plain navy sports socks
- School colours shorts or skort
- Training shoes or sports boots
- Plain navy tracksuit bottoms (sports logos or designs are not permitted) or School colours tracksuit bottoms
- School colours hoodie or plain Navy Hoody (sports logos or designs are not permitted)

Students wearing clothing associated with religious belief should, where possible, adhere to the school's colour scheme.

## **Jewellery and Hairstyles**

Our aim is to establish a culture of respect and hard work and as such we plan to remove avoidable distractions with the following guidelines:

**Hairstyles** should be sensible and hair colour should be natural. Please check with your child's Learning Manager before considering any dramatic changes to style and colour. No patterns should be shaved into hairstyles.

Hair accessories should be discreet and in dark colours e.g. black or blue.

No scarves or bandanas (unless for religious reasons).

**Jewellery** – No jewellery is allowed except a wristwatch and a Medic Alert necklace/bracelet. Smart Watches are not permitted. If any student is thinking about having piercings, this should be done at the start of the summer holidays as no student will be allowed to wear any type of piercing whilst in the academy.

**Nails** – Nail polish is not allowed. False/Acrylic/Gel nails are also not allowed.

**Makeup** – Any makeup worn by students should be very discreet. Students will be asked to remove makeup if not discreet. Eyebrows and eyelashes should be natural with no patterns/no shavings/no enhancements.

**Mobiles** are not allowed in the academy. They must be out of sight in students' bags and switched off until students cross the blue line at 3:30pm.

## **Coats**

Coats must be plain with only small discreet logos permitted. Denim and Leather coats are not permitted.

Coats must be removed upon entering the school building.

## **Mobile Phones**

Students are responsible for their own property whilst in school.

For students that bring Mobile phones to school, they must have them turned off and stored either in their bag or locker for the duration of the school day.

Students found using mobile phones in school will have them confiscated and a parent will be contacted to collect them.

## **Shoes**

**\*\*School shoes must be of formal style, plain black and able to be polished or patent leather without any other colour or unacceptable embellishments (Large / Coloured**

Buckles, Large / Coloured Tassels, Large / Coloured Bows). Heels and trainers are not permitted.

**We would recommend that before making a purchase, that you check with school to determine if the chosen footwear would be deemed appropriate.**

Examples of appropriate footwear



### Skirts & Trousers

**\*\*School Skirts must be Charcoal Grey and knee Length. Knitted and figure-hugging skirts are not permitted.**

**\*\*Trousers must be Charcoal Grey and tailored. Leggings are not permitted.**

A graphic with a blue background. On the left, a white box contains a checklist of school supplies. On the right, a black and white illustration of a fist pointing towards the text "ARE YOU READY?".

✓ YOU MUST HAVE:

- PEN (+ SPARES)
- PENCIL
- RUBBER
- RULER
- READING BOOK
- PLANNER
- KNOWLEDGE ORGANISER

HELPFUL TO HAVE:

- CALCULATOR
- PURPLE PEN
- GREEN PEN
- HIGHLIGHTER/S

ARE YOU READY?

These **MUST** be in a pencil case. All students should have a bag suitable for carrying books

## Lunch Time & Break Time Food Options

For the start of the new academic year, we started providing an 'All New' lunch and breaktime food offering where students can purchase individual items or a meal combo.

Below is a sample of what is on offer:

Price List Break Menu	
Generation Juice - 250ml	35p
Generation Juice - 500ml	70p
Viva Milk	70p
Crumpet	60p
Slice of Toast	35p
Hash Brown (Friday only)	50p
Bacon Roll	£1.35
Sausage Patty in a Roll	£1.35
Croissant	75p
Fruit - per item	55p
Rice Crispies with milk carton	85p
Corflakes with milk carton	85p
Yoghurt	70p
Cheese Panini (1/2)	70p
Pork Sausage Roll	75p
Vegan Sausage Roll	75p

Price List Lunch Menu	
Generation Juice - 250ml	35p
Generation Juice - 500ml	70p
Viva Milk	70p
Main Meal (inc. vegetable)	£1.95
Plain Jacket Potato	£1.00
Jacket Potato - one topping	£1.60
Extra Jacket Potato topping	50p
Side Options - Mixed Salad, Baked Beans, Seasonal Vegetable, Mushy Peas, Coleslaw, Rice, Naan Bread, Roast Potatoes & Mashed Potatoes	40p
Portion of Chips	£1.10
Portion of Potato Wedges	90p
Garlic Bread Slice	35p
Smartfood Pasta	£1.60
Smartfood Pasta and Cheese	£1.95
Panini Selection	£1.70
Wrap Selection	£1.70
Bap Selection	£1.70
Sub Roll Selection	£1.90
Simple Sandwich - one filling	£1.30
Simple Sandwich - two fillings	£1.60
Fresh Fruit Selection	55p
Fresh Fruit Salad	90p
Yoghurt Selection	70p
Dessert with Custard	90p
Frozen Yoghurt Pot	45p
Ice Cream Pot	45p
Homebakes	80p
Sauce Sachet	5p

Price List Meal Deals	
All Meal Deals £2.35	
OPTION 1	Main Meal Dessert or Homebake or Fruit or Yoghurt Generation Juice 250ml
OPTION 2	Vegetarian Meal Dessert or Homebake or Fruit or Yoghurt Generation Juice 250ml
OPTION 3	Smartfood Pasta Dessert or Homebake or Fruit or Yoghurt Generation Juice 250ml
OPTION 4	Jacket Potato - One Topping Dessert or Homebake or Fruit or Yoghurt Generation Juice 250ml
OPTION 5	Simple Sandwich - One filling Dessert or Homebake or Fruit or Yoghurt Generation Juice 250ml

Please note: students eligible for Free School Meals can purchase a meal deal as part of this or any items with a value up to £2.50 per day. Any additional lunch or break items will need to be paid for as an extra

Break items and Lunch items will be deducted from the balance on your child account on the My Child at School App.



## Contacting School

We have a number of ways you can contact Ingleby Manor School.

Depending on your need or query, please see below the email address and contact extensions you are required to use to connect with the department that is most appropriate to assist you.

- **Student Absence, Student Appointments, Queries on Attendance**

Mailbox: [attendance@inglebymanorschool.org.uk](mailto:attendance@inglebymanorschool.org.uk)

Telephone Option: 01642 352450 option 1

- **Detentions, Behaviours, Pastoral Concerns, Meeting request with a Learning Manager**

Mailbox: [Behaviours@inglebymanorschool.org.uk](mailto:Behaviours@inglebymanorschool.org.uk)

Telephone Option: 01642 352450 option 2

- **Your child's progress, Option choices, Sets & Subjects, General questions, Request to meet with a member of the Leadership Team / Exams, Safeguarding Concerns**

Mailbox: [parents@inglebymanorschool.org.uk](mailto:parents@inglebymanorschool.org.uk)

Telephone Option: 01642 352450 option 0

- **SEN enquiries**

Mailbox: [sen@inglebymanorschool.org.uk](mailto:sen@inglebymanorschool.org.uk)

Telephone Option: 01642 352450 option 3

- **Finance Queries, Trips, Lunch payments**

Mailbox: [imfsaccounts@inglebymanorschool.org.uk](mailto:imfsaccounts@inglebymanorschool.org.uk)

- **Formal Complaints**

Mailbox: [younge3@inglebymanorschool.org.uk](mailto:younge3@inglebymanorschool.org.uk)

Please see the Contacts page on the school website for more information on contacting Ingleby Manor School and the expected timeframe for replies.

## Meet our Staff - December

Principal	Mr Ray Parkinson
Vice Principal	Mr Steve Smith
Assistant Principal	Miss Katy Nelson
Assistant Principal	Mr Andrew Taylor
Finance Manager	Miss Sarah Powell
Office Manager / HR/ Principals PA / DPO	Mrs Eve Young

### **Pastoral & SEN**

- SENCO – Mrs Louise Arnold
- Pastoral & SEN Support Officer – Miss Tracy Horkan
- DSL & Deputy Director of Inclusion – Mrs Beverley Bird
- Bridge Manager – Mrs Abby Swainston
- Teaching Assistants – Mrs Michelle Caygill, Miss Paula Martinez, Miss Louise Willis,
- **Learning Managers**
- Mrs Rachel Barwick
- Mr Phil Brooks
- Mr Adam McMahon
- Mr Peter Clark

### **Operational Support Management**

- Office Manager / HR / Principals PA / DPO – Mrs Eve Young
- Finance Manager – Miss Sarah Powell

### **Administration Assistants**

- Miss Maisie Jarrett
- Mrs Lucy Spoor
- Mrs Tracey Currie

### **Attendance**

- Attendance Coordinator – Miss Amanda Brown

### **Exams**

- Exams Officer – Mrs Rachael Evans

### **LRC Manager**

- Miss Leanne Gaughan

### **Teachers**

Mr Richard Fairhurst	Mr Matthew Thomas	Mr Lewis Day
Miss Caitlin Donnelly	Mrs Jo Rose	Mrs Alison Kempson
Mrs Nathalie Weldon	Mr Gurinder Singh	Miss Lily Smith
Mr Rob Anson	Mrs Mary Bradford	Mrs Carolyn Neale
Mrs Louise Arnold	Mrs Rachel Wheelhouse	Miss Sarah Johnson
Mrs Tarah Gow	Mr Ben Ham Ying	Mrs Rachel Gonzalez
Mrs Rachel Jones	Mr Matthew Blanks	Mrs Helen Livingstone
Miss Katie Baggott	Mr Andy Taylor	Mrs Rebecca Owen
Miss Alice Towers	Mrs Sarah Bone	Mrs Sarah Newlove
Mrs Vicky Donnelly	Miss Roxana Popa	Mrs Rosie West
Mr Lewis Jones	Mr David Dunning	

### **Departmental Heads**

- English –Mrs Helen Livingstone
- Maths – Mr Lewis Jones
- Science – Mrs Rosie West (Mrs Bradford acting HOD due to maternity leave)
- PE - Mr Matt Thomas
- History – Mrs Alison Kempson
- Geography – Mrs Tarah Gow & Mr David Dunning
- MFL – Mrs Rachel Gonzalez
- Business & Computing – Mrs Vicky Donnelly
- Art – Mrs Rachel Jones

### **Administration, Facilities & Catering**

- Data Officer - Mr Paul Robinson
- Finance Administrator – Miss Emma Clasper
- IT Technician – Mr Ben Pratt
- Site Manager – Mr Darren Nunn
- Site Supervisor – Mr Jeff Meaney
- Science Technician – Mrs Dawn McNally
- Eng, Art & Food technician – Mrs Teriann Hill
- Catering Manager – Mrs Georgina Charnley
- Catering Assistants –Mrs Lisa Grout, Mrs Kathy Hutton, Miss Emma Kane, Miss Alison Notman, Miss Joanne Blackburn

## Ingleby Manor School Consultation

### We are consulting on:

- An increase in the number of students in each year group from 120 to 150 from September 2025.
- Removal of the 6th Form designation from September 2025.

The consultation will run from **Tuesday 21st November 2023 until midnight on Friday 19th January 2024.**

We will publish a summary of frequently asked questions received during the consultation and our responses to them.

.....

We will consider the views you express during this consultation before deciding whether to submit a formal application to the Regional Schools Commissioner.

If an application is made then the Regional Schools Commissioner will also consider the outcomes of this consultation before making the final decision.

We will complete an Equality Impact Assessment to ensure that any proposals fully understand the potential impacts on all groups of students and staff.

To provide feedback, click on the link below:

[https://forms.office.com/Pages/ResponsePage.aspx?id=j748wq\\_ohEugfnLJq2pPrVmonwhqIV1PiT0k8\\_wcuPdUMTFORkRaN0Y0SzQyV1ZPTFIPQVo4SFJRVy4u](https://forms.office.com/Pages/ResponsePage.aspx?id=j748wq_ohEugfnLJq2pPrVmonwhqIV1PiT0k8_wcuPdUMTFORkRaN0Y0SzQyV1ZPTFIPQVo4SFJRVy4u)



## Upcoming Events

- 24<sup>th</sup> January - Year 11 Celebration Evening (5.30pm – 7.30pm)
- 13<sup>th</sup> February - Year 7 Parents Evening – Virtual (4.00pm-7.00pm)
- 27<sup>th</sup> February - Year 9 Options Evening (5.30pm-6.30pm)
- 6<sup>th</sup> March - Year 9 Parents Evening – Virtual (4.00pm-7.00pm)



- 26<sup>th</sup> March - Year 8 Parents Evening – Virtual (4.00pm-7.00pm)

## Returning After the Festive Break

### **School Reopens for All students on Wednesday 3<sup>rd</sup> January 2024**

Students are required to be on site for 8.25am ready to start lessons at 8.30am

Follow us on Twitter!



[https://twitter.com/free\\_manor](https://twitter.com/free_manor)

